

G S W
Through the years
1946-1966

In preparation for the University's centennial celebration in 2006, the *Aeolian* is peering through the mists of time, highlighting 20 years of GSW history each issue.

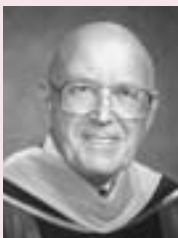
Mildred Lowery Memorial Chapel—A groundbreaking ceremony for the Mildred Lowery Memorial Chapel was a part of the Homecoming program, Feb. 4, 1950. Lowery, a 1934 graduate from Richland, Ga., was the first president of the organized Young People's Christian Association. The chapel, a simple structure of concrete blocks, located near Morgan Hall, was in poor condition by the early 1970s and was removed to make way for campus expansion.



College Lake—In November 1949, the site for College Lake was cleared. Plans detailed an eight-acre lake and a 13 foot dam with water depth from 10 feet at the dam to four feet in the upper part of the lake. Four springs behind Florrie Chappell Gym were to provide water. Facilities for fishing, boating, swimming and picnicking were included. In later years, a small outdoor amphitheater was constructed near the lake, but this space gave way to building sites with four-year college status.



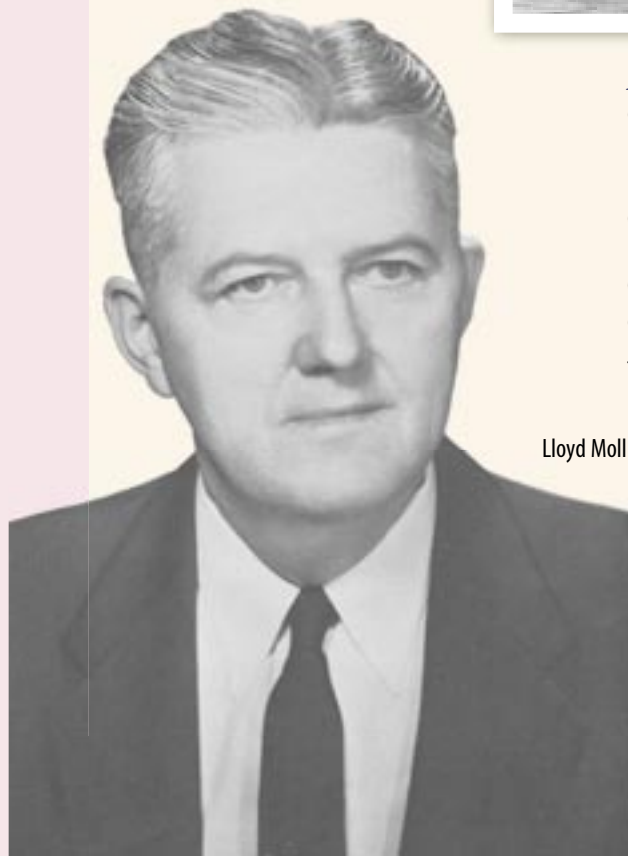
Jackson Hall—This facility was completed in 1955 at a cost of \$210,000. Originally, it was a classroom-auditorium building, housing chemistry and biological laboratories and providing an auditorium to seat 400. It was named in honor of Deborah G. Jackson, a native of Lee County, Ga., who had made possible through her will the Jackson Loan Fund. When Georgia Southwestern became a four-year college, new science buildings were constructed, freeing classroom space in Jackson Hall for the music program.



Henry King Stanford



William B. King



Lloyd Moll

Presidents—Henry King Stanford served as the campus chief executive from 1948-50. Stanford is also a past president of Birmingham Southern College, the University of Miami and the University of Georgia. Lloyd Moll served as president from 1950-63. He was previously president of Middle Georgia College in Cochran. William B. King led the institution beginning in 1963.

Special thanks to Mildred Tietjen and Paula Williams, photos courtesy the GALE